



Splash Guard Kit

Models: T300, T300e, Speed Scrub 300, A300



This kit includes the necessary part to protect circuit breaker panel from over-spray, and prevent water from entering battery compartment, when rinsing out recovery tank.

INSTALLATION INSTRUCTIONS:

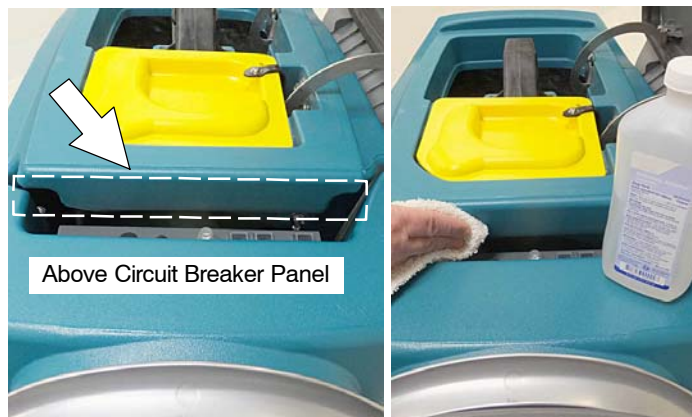
Installation Time: .5 Hours

Tools Required: Isopropyl rubbing alcohol

FOR SAFETY: Before servicing machine, stop on level surface, turn key off, and set parking brake if equipped.

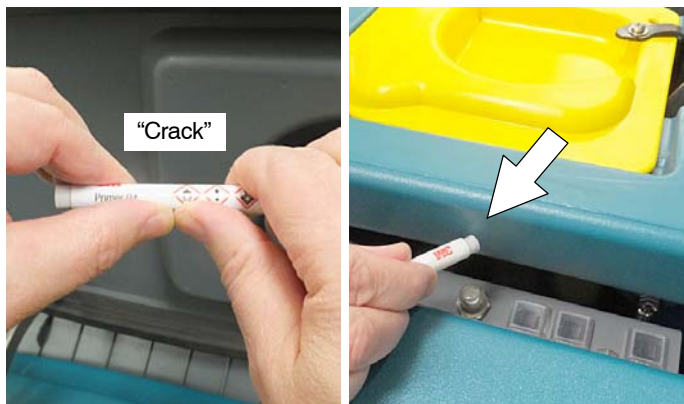
1. Thoroughly clean the outlined surface area on the recovery tank with a mixture of isopropyl rubbing alcohol and water. Allow surface to dry after cleaning.

FOR SAFETY: When using isopropyl rubbing alcohol, follow the manufacturer's handling instructions on container.

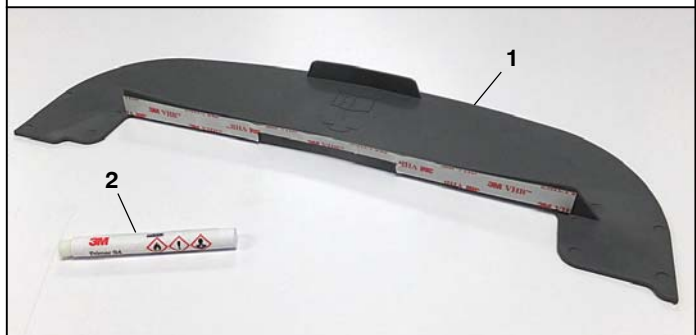


2. Gently bend or pinch the primer pen at center until the glass vial inside breaks. It will make a cracking sound. Rub primer pen on the clean recovery tank surface as shown. **Allow primer to dry for 5 minutes before applying splash guard.**

⚠ WARNING: Flammable - Keep primer away from heat, sparks, flame and sources of static discharge. Use in a well-ventilated area. Avoid prolonged breathing of vapors. Avoid contact with eyes/skin. Keep out of reach of children.



9014905 Kit Contents



Ref	Description	Qty.
1	1226042 Guard, Splash, Circuit breaker w/ adhesive tape	1
2	1226296 Cleaner, Primer, Pen	1

3. Remove backer from adhesive tape and center the splash guard on top of solution tank as shown.



4. Hold the splash guard as shown and carefully adhere the guard to the primed surface. Firmly press the adhesive tape against the tank surface. Be careful not to press the center of the guard downward. The guard should lay flat on top of solution tank.



5. Let splash guard set for 24 hours for tape adhesive to cure.